

An aerial photograph of a modern, multi-story apartment building. The building features a mix of white and grey facades, numerous balconies with dark railings, and several rooftop terraces covered in lush green grass. The surrounding area shows older, more traditional buildings and a street with parked cars.

real ideal

Imagine owning a stylish new home in one of Attica's fastest-growing urban destinations – Piraeus. Our new project Real Ideal brings this vision to life — a thoughtfully designed residential project that blends modern architecture, sustainable living, and the spirit of a city in transformation.

After the successful delivery of the first units at Piraeus Gate, the development continues with Real Ideal — a sustainable, energy-efficient building constructed to strict European standards.

10 levels

21 apartments

Storages spots

G.B.A over 1.200 sq.m

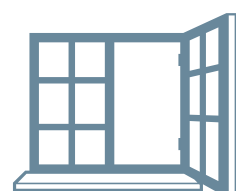
**CLICK TO SEE
PRICES AND
AVAILABILITY**



Key features



Air conditioning



Aluminum joinery with double glass



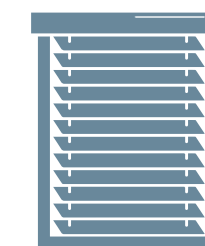
Moisture insulation - thermal insulation - thermal facade



New elevator with release system



New mechanical, wiring, plumbing and drainage systems installation



Electric roller shutters



Eco-materials



New LED technology lighting



Installing interior cabinets/wardrobes, new interior doors and kitchen installation



Installation of sanitary wares and tile



Modern interior design

TECHNICAL REPORT

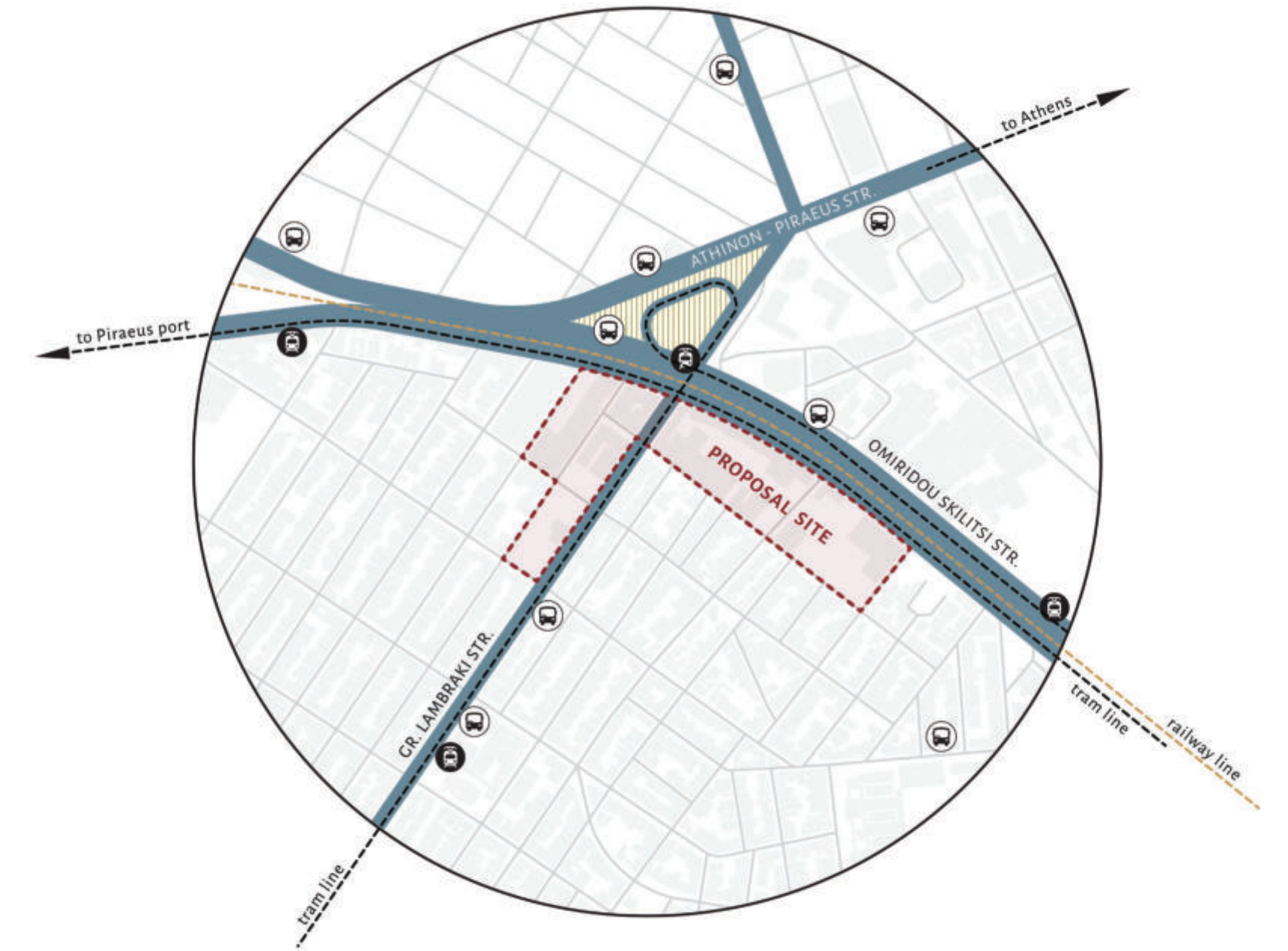


Typical floor plan

The **7 level** building will include **21 apartments** starting from **45 square** meters and going up to **72 square meters**.

**CLICK TO SEE
THE FLOOR
PLANS**





The location

Located at the gateway to Piraeus, the Piraeus Gate development marks a new era of urban regeneration for the city.

The project introduces a carefully planned mix of residential, commercial, and green spaces, creating a balanced and inclusive environment.

By improving connectivity and revitalizing the surrounding area, Piraeus Gate aims to build a dynamic community that reflects the city's growth and modern identity.

Masterplan

SKYWAY

Greenfield residential project with **44 apartments, underground parking and 1 retail unit.**

SKYBLUE

Greenfield development, **32 serviced apartments** leased to an international hospitality operator & a **1 commercial unit.**

GATEWAY BUSINESS HUB

Greenfield, built to suit commercial project, with over **240 workspaces** under the operation of a knowing company & a **retail unit.**

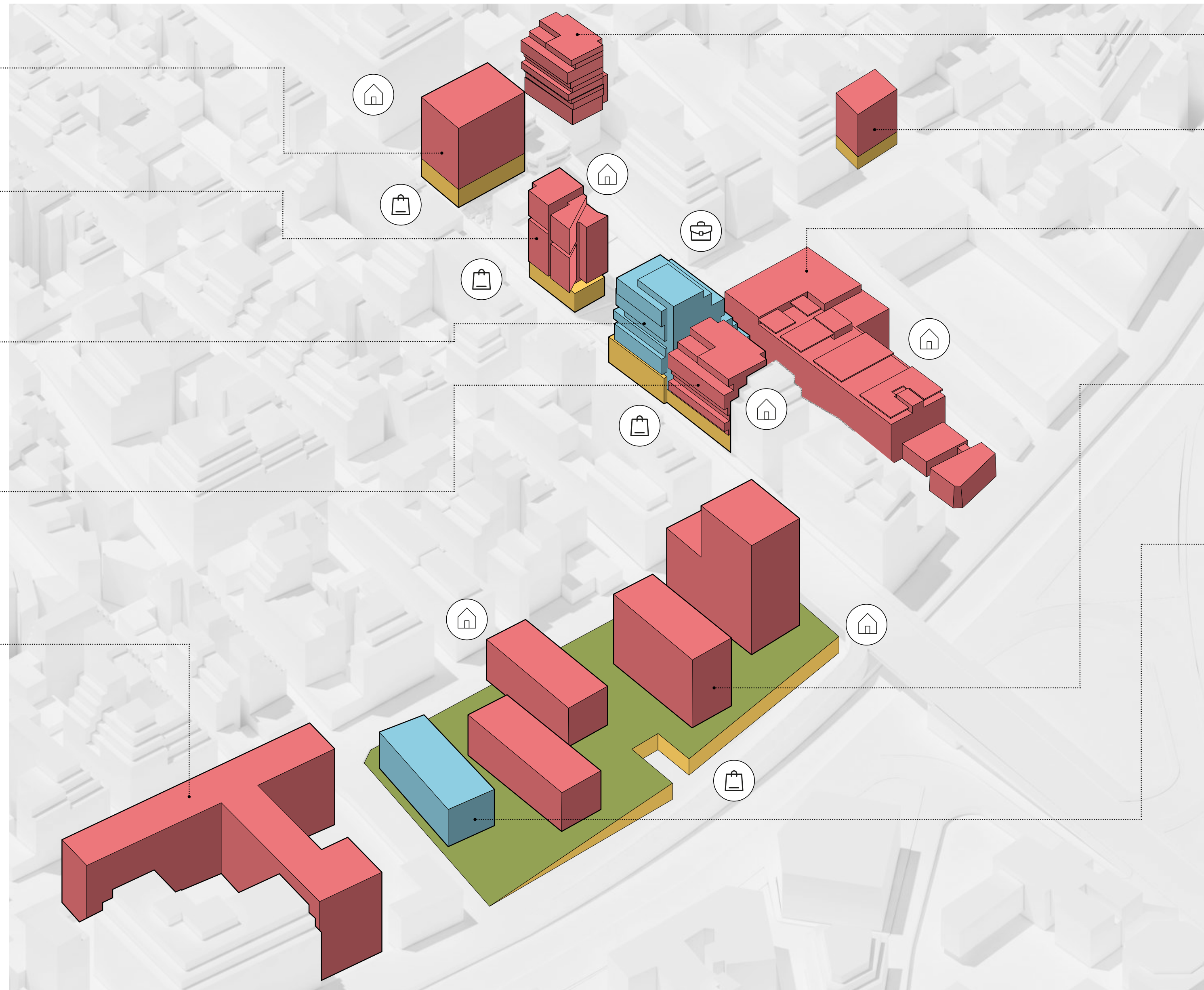
URBAN GL

Brownfield hospitality project, with **66 serviced apartments** leased to an international hospitality operator & a **retail unit.**

PIRAEUS OASIS

3 residential high rise towers consisting of **190 residences** in total, including parking spots & storage areas.

The development extends naturally into the urban fabric, integrating seamlessly with the city's existing functions. Ground floor transparency showcases retail spaces, while offices and residences occupy the upper levels. Support facilities and parking are efficiently organized below ground. Above, green rooftops and platforms create spaces for recreation while enhancing environmental sustainability.



REAL IDEAL

Greenfield 10 level building with **21 apartments**

PIRAEUS GREATER APARTMENTS

Greenfield residential complex with **19 apartments.** Sold out & constructed.

S&S NEXUS CENTER

Brownfield development, co-living campus of **170 serviced apartments & amenities,** leased to an international hospitality operator.

URBAN OASIS PIRAEUS

3 residential high-rise buildings, with over **357 residences** of various types with **underground parking and storage spaces,** & **retail properties.**

PIRAEUS HUB

The development suggests a vibrant and inviting marketplace including a diverse range of **retails & office spaces.**




Promo Video




An urban redevelopment project with over 105.000 sq.m. (GBA) that we are aiming to certify as a LEED Neighborhood.




Geographical proximity


850 m
Metro station


750 m
University of Piraeus


1.5 km
Metropolitan hospital


1 km
Marina Zeas


50 m
Piraeus Gate Hub

The residential market of Piraeus offers a unique blend of history, culture, and modern living, making it an ideal choice for those seeking a dynamic urban lifestyle.

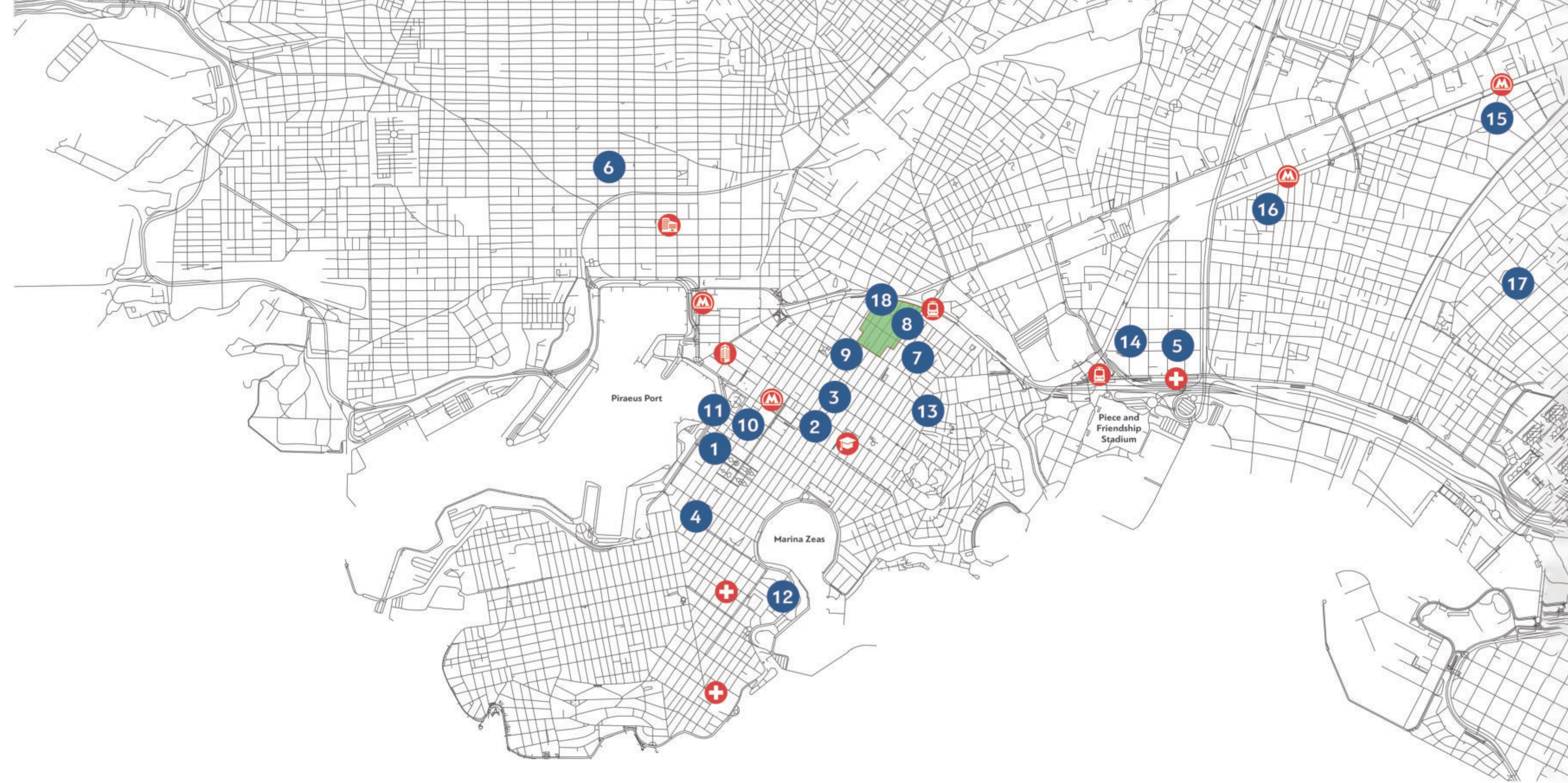
The city's strategic location and continuous infrastructure development drive strong demand for both home ownership and high-yield investments.

As the third largest municipality in Greece and home to one of Europe's busiest ports, Piraeus attracts a significant number of visitors and professionals every day.







DKG Development has established itself as a key driver of the urban regeneration that is taking place in Piraeus, with a series of landmark projects redefining the city's character.

Formerly inactive areas are being transformed into vibrant hubs, hosting contemporary residences, professional spaces, and green infrastructure.

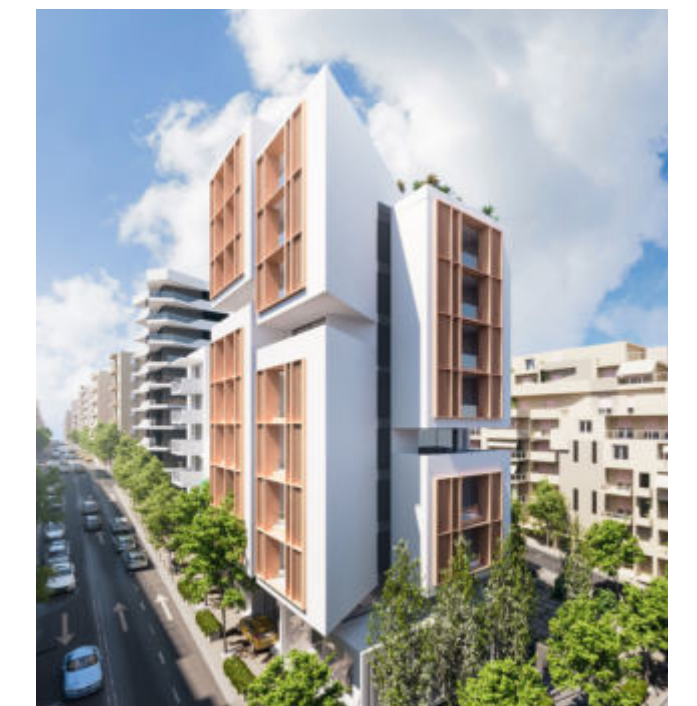
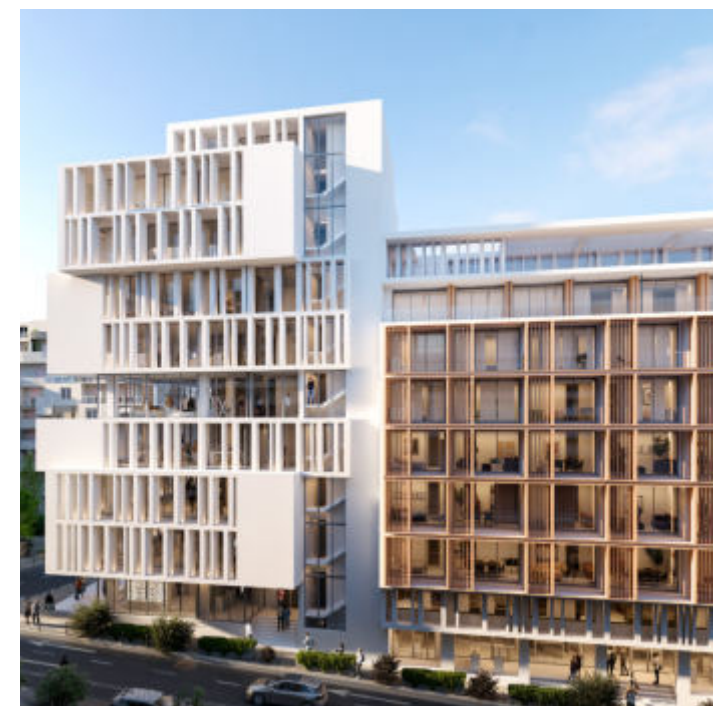
Our vision is to create a lively, sustainable urban environment that bridges tradition with modern development.



Key Locations

-  Metro
-  Tram station
-  Hospital
-  Piraeus Tower
-  Piraeus Port Plaza
-  University of Piraeus

Total GBA: **105.000 sq.m.**



Prime Location

The location of Real Ideal is a key investment advantage – a well-connected neighborhood with easy access to public transport, schools, services, and Piraeus' commercial center.

The comprehensive regeneration of the area through the Piraeus Gate project further enhances its long-term value.

Expected Capital Growth

Over time, Real Ideal apartments offer significant potential for capital appreciation and stable rental income – a safe and rewarding investment opportunity.



Exclusive Buyer Benefits

- ▶ Access to pre-sale prices
- ▶ Flexible payment or installment terms
- ▶ Priority of unit selection
- ▶ Eligibility for future discounts on new DKG Development projects





**MODERN INTERIOR &
EXTERIOR DESIGN**



COMFORTABLE & SPACIOUS





real
ideal



dkg-development.com

Investment and
construction
company



DKG
DEVELOPMENT



@dkgdevelopment